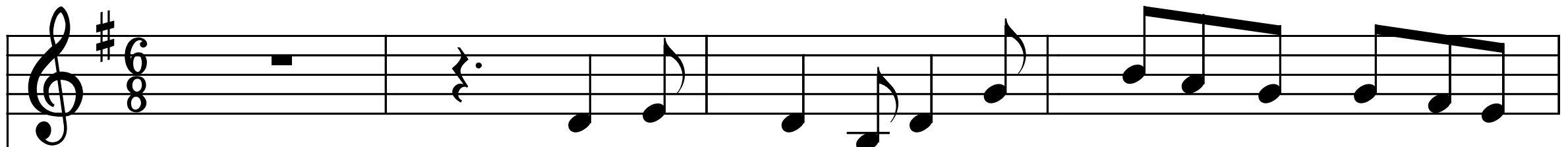



Soprano



E- ra se- ra, e- ra se- ra, di un gior- no di

The Soprano part is written on a treble clef staff with a key signature of one sharp (F#) and a 6/8 time signature. It begins with a whole rest in the first measure, followed by a quarter rest in the second measure. The melody starts in the third measure with a quarter note G4, followed by a quarter note A4, a quarter note G4, a quarter note F#4, a quarter note E4, and a quarter note D4. The final measure contains a descending eighth-note triplet: G4, F#4, E4.

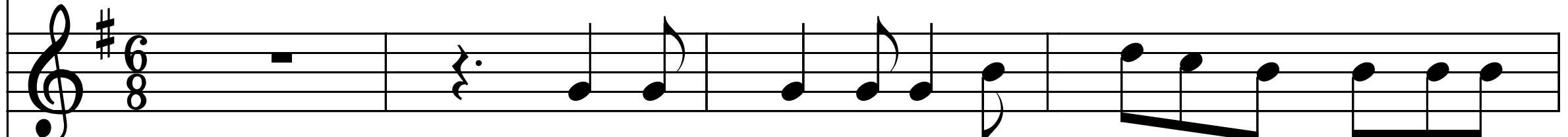
Alto



e- ra se- ra, e- ra se- ra, di un gior- no di

The Alto part is written on a treble clef staff with a key signature of one sharp (F#) and a 6/8 time signature. It begins with a whole rest in the first measure, followed by a quarter rest in the second measure. The melody starts in the third measure with a quarter note G4, followed by a quarter note A4, a quarter note G4, a quarter note F#4, a quarter note E4, and a quarter note D4. The final measure contains a descending eighth-note triplet: G4, F#4, E4.

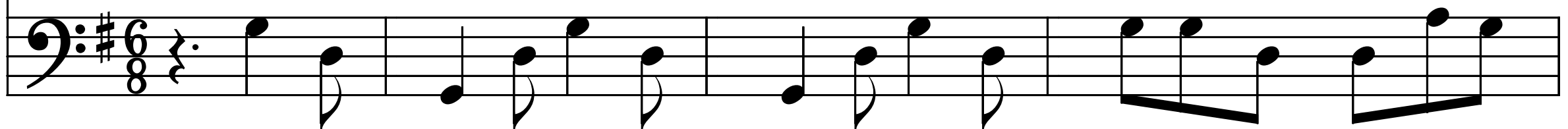
Tenor



e- ra se- ra, e- ra se- ra, di un gior- no di

The Tenor part is written on a treble clef staff with a key signature of one sharp (F#) and a 6/8 time signature. It begins with a whole rest in the first measure, followed by a quarter rest in the second measure. The melody starts in the third measure with a quarter note G4, followed by a quarter note A4, a quarter note G4, a quarter note F#4, a quarter note E4, and a quarter note D4. The final measure contains a descending eighth-note triplet: G4, F#4, E4.

Bass



E- ra se- ra, e- ra se- ra, e- ra se- ra, di un gior- no di

The Bass part is written on a bass clef staff with a key signature of one sharp (F#) and a 6/8 time signature. It begins with a quarter rest in the first measure, followed by a quarter rest in the second measure. The melody starts in the third measure with a quarter note G3, followed by a quarter note A3, a quarter note G3, a quarter note F#3, a quarter note E3, and a quarter note D3. The final measure contains a descending eighth-note triplet: G3, F#3, E3.

5

Soprano



fes- ta, la mia bel- la mi sta- va ac-

Alto



fes- ta, la mia bel- la mi sta... mi sta- va ac-

Tenor



fes- ta, di fes- ta, la mia bel- la mi sta- va ac-

Bass



fes- ta, la mia bel- la mi sta... mi sta- va ac-

Detailed description: This image shows a four-part vocal score for Soprano, Alto, Tenor, and Bass. The music is in G major (one sharp) and 4/4 time. The Soprano part starts with a fermata on the first measure. The Alto part has a fermata on the second measure. The Tenor part has a fermata on the fourth measure. The Bass part has a fermata on the first measure. The lyrics are: Soprano: fes- ta, la mia bel- la mi sta- va ac-; Alto: fes- ta, la mia bel- la mi sta... mi sta- va ac-; Tenor: fes- ta, di fes- ta, la mia bel- la mi sta- va ac-; Bass: fes- ta, la mia bel- la mi sta... mi sta- va ac-.

9

Soprano

ca- an- to mi di- ce- va, mi di- ce- va io -t'a- mo

Alto

ca- an- to mi di- ce- va, mi di- ce- va io -t'a- mo

Tenor

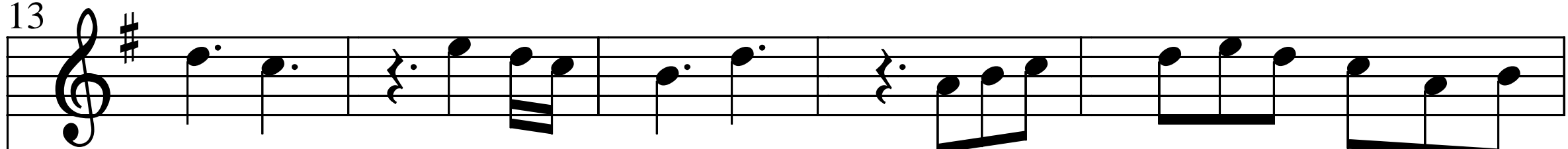
ca- an- to mi di- ce- va, mi di- ce- va io -t'a- mo

Bass

can- to mi di- ce- va, mi di- ce- va, mi di- ce- va io -t'a- mo

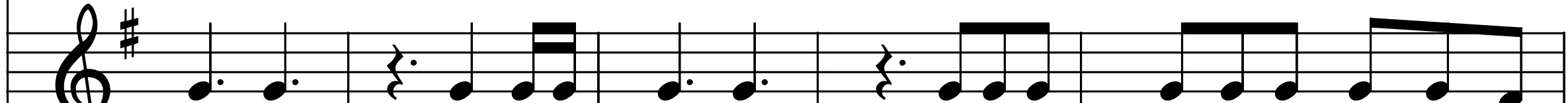
Detailed description: This image shows a four-part vocal score for Soprano, Alto, Tenor, and Bass voices. The music is in G major (one sharp) and 4/4 time. It begins at measure 9. The Soprano, Alto, and Tenor parts have identical lyrics: "ca- an- to mi di- ce- va, mi di- ce- va io -t'a- mo". The Bass part has different lyrics: "can- to mi di- ce- va, mi di- ce- va, mi di- ce- va io -t'a- mo". The Soprano, Alto, and Tenor parts use treble clefs, while the Bass part uses a bass clef. The lyrics are written below the notes, with hyphens indicating syllables across notes. The Soprano, Alto, and Tenor parts have a melodic line that rises and then falls, while the Bass part has a more rhythmic, descending line.

Soprano



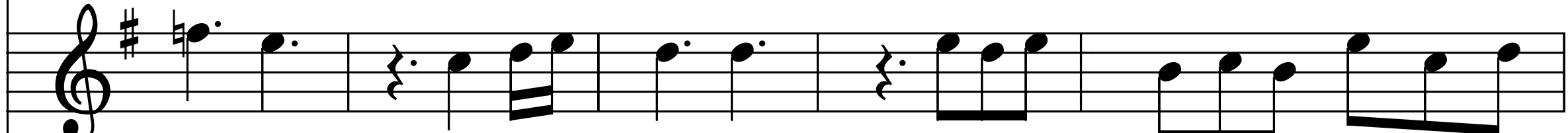
tan- to, Si te lo giu- ro, Si te lo giu- ro da- van- ti ai tuoi

Alto



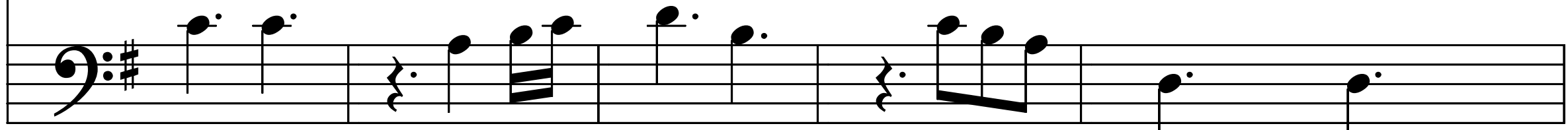
tan- to, Si te lo giu- ro, Si te lo giu- ro da- van- ti ai tuoi

Tenor



tan- to, Si te lo giu- ro, Si te lo giu- ro da- van- ti ai tuoi

Bass



tan- to, Si te lo giu- ro, Si te lo giu- ro ai

Soprano

pie' I tuoi oc- chi, i tuoi oc- chi son ne- ri son

Alto

pie' I tuoi oc- chi, i tuoi oc- chi son ne- ri son

Tenor

pie' I tuoi oc- chi, i tuoi oc- chi son ne- ri son

Bass

pie' I tuoi\ oc- chi, i tuoi oc- chi i tuoi oc- chi son ne- ri son

Soprano

bel- li, i tuoi ca- pel- li, so- no di

Alto

bel- li, i tuoi ca- pel- li, so- no so- no di

Tenor

bel- li, son bel- li, i tuoi ca- pel- li, so- no di

Bass

bel- li, i tuoi ca- pel- li, so- no so- no di

Soprano

o- o- ro. Per te vi- vo, per te vi- vo e per te

Alto

o- o- ro. Per te vi- vo, per te vi- vo e per te

Tenor

o- oro. Per te vi- vo, per te vi- vo e per te mo-

Bass

o- ro. Per te vi- vo, per te vi- vo per te vi- vo e per te

30

Soprano

mo- ro Si te lo giu- ro, Si te lo

Alto

mo- ro Si te lo giu- ro, Si te lo

Tenor

ro Si te lo giu- ro, Si te lo giu-

Bass

mo- ro Si te lo giu- ro, si te lo

34

Soprano

giu- ro da- van- ti ai tuoi pie'\ Dam- mi un

Alto

giu- ro da- van- ti ai tuoi pie'\ Dam- mi un

Tenor

ro da- van- ti ai tuoi pie'\ Dam- mi un

Bass

giu- ro ai pie' Dam- mi un\ ric- cio, dam- mi un

Soprano



ric- cio, dam- mi un ric- cio dei tuo- i ca- pel- li, che li

Alto



ric- cio, dam- mi un ric- cio dei tuo- i ca- pel- li, che li

Tenor



ric- cio, dam- mi un ric- cio dei tuo- i ca- pel- li, ca- pel- li, che li

Bass



ric- cio dam- mi un ric- cio dei tuo- i ca- pel- li, che li

41

Soprano

ser- bo, per tua me- mo- ri- a. La' sul

Alto

ser- bo, per tua per tua me- mo- ri- a. La' sul

Tenor

ser- bo, per tua me- mo- ri- a. La' sul


Bass

ser- bo, per tua per tua me- mo- ria. La' sul cam- po, la' sul

Detailed description: This image shows a four-part vocal score for Soprano, Alto, Tenor, and Bass voices. The music is in G major (one sharp) and 4/4 time. The Soprano part begins with a half note G4, followed by a quarter note A4, and a dotted quarter note B4. The Alto part starts with a quarter note G4, followed by quarter notes A4, B4, and C5. The Tenor part begins with a dotted quarter note G3, followed by a dotted quarter note A3. The Bass part starts with a quarter note G2, followed by quarter notes A2, B2, and C3. The lyrics are: Soprano: ser- bo, per tua me- mo- ri- a. La' sul; Alto: ser- bo, per tua per tua me- mo- ri- a. La' sul; Tenor: ser- bo, per tua me- mo- ri- a. La' sul; Bass: ser- bo, per tua per tua me- mo- ria. La' sul cam- po, la' sul. The score is divided into four measures by bar lines. Measure 41 contains the first two notes of each part. Measure 42 contains the next two notes. Measure 43 contains the next two notes. Measure 44 contains the final notes and rests.


45

Soprano



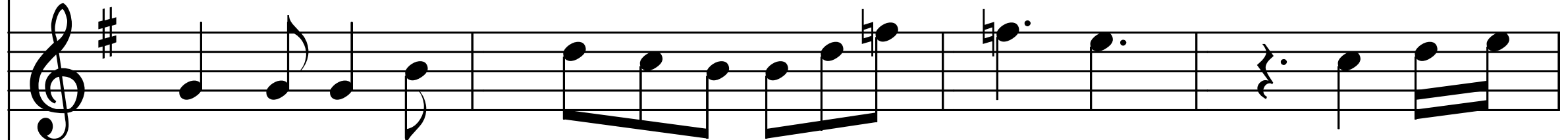
cam- po, la' sul cam- po del- la vit- to- ria I tuoi ca-

Alto



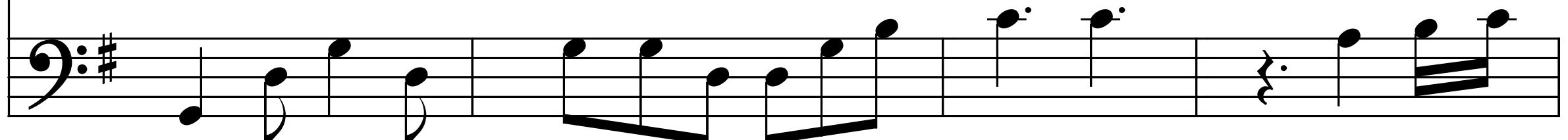
cam- po, la' sul cam- po del- la vit- to- ria I tuoi ca-

Tenor



cam- po, la' sul cam- po del- la vit- to- ria I tuoi ca-

Bass



cam- po la' sul cam- po del- la vit- to- ria I tuoi ca-

Soprano

pel- li, i tuoi ca- pel- li li vo- glio ba- -ciar.

Alto

pel- li, i tuoi ca- pel- li li vo- glio ba- -ciar.

Tenor

pel- li, i tuoi ca- pel- li li vo- glio ba- -ciar.

Bass

pel- li, i tuoi ca- pel ba- ciar ...e- ra

Soprano

se- ra, di un gior- no di fes- ta\

Alto

se- ra, di un gior- no di fes- ta\

Tenor

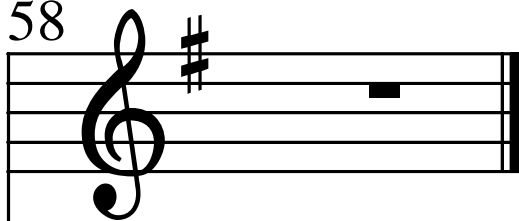
se- ra, di un gior- no di fes- ta\

Bass

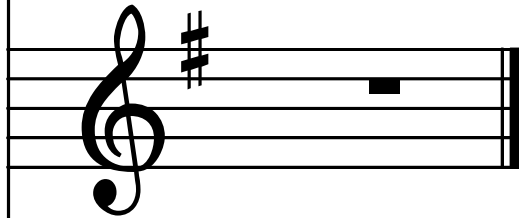
se- ra, e- ra se- ra, di un gior- no di fes- ta.. \

58

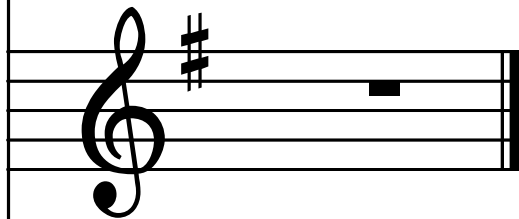
Soprano



Alto



Tenor



Bass

